



Specification Sheet

Model # SA-27WT-LPE



Provides the same performance as the high profile base, when additional clearance is not necessary. Tucks in closer to the roof to be less conspicuous and more resistant to high winds. Perfect for any installation requiring movement of the solar panel. Can be tilted and raised to 35 degrees or set flat against the solar fan. The Tilt Fan can also be rotated 360 degrees. As the seasons change, so does the angle of the sun. This solar panel can be changed year round to provide maximum performance.



Technical Information

Weight

Fan Weight: 24 lbs / 10.88 kg

Fan Packaged: 29 lbs. / 13.15 kg

Performance

Air Flow Rate:
900 to 1200 CFM
Depending on solar exposure
Ventilation: Up to 1250 sq.ft.
Attic must support intake air
for best performance

Electrical

Solar Panel: 27 watt, 17 to 22 DC,
1.25 amp, 36 mono-crystalline
cell, solar cells with black back
sheet
Motor: Solaro Max Aire
Brushless DC Motor, 10-22VDC

Material

Housing System: Spun Formed,
Aircraft Grade Aluminum
Fan Blade: 12" Aluminum, Factory Balanced
Mesh Screen: Stainless Steel, 1/4"
Mesh, Rodent Control
Wiring: 18 Gauge Copper Conductors
with PVC Insulation



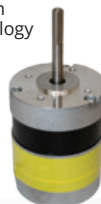
Housing & Flashing System

Aircraft grade, spun-formed aluminum for the utmost quality protection
Inner housing system is aerodynamically designed to produce the highest possible radial air exhaust
Powder coated outer shell



Solaro Max Aire Motor

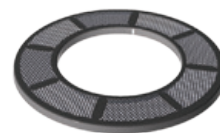
Brushless Electronic Motor with Maximum Yield Technology. This new motor technology was developed by Solaro Energy - Our engineers leveraged lessons learned from our original brushless electronic motor that we used for over 12 years. This new motor technology offers about 30% better efficiency and air moving performance, with an amazing 100,000 hours average motor run time!



Components

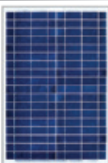
Mesh Screen

Constructed specifically for the Solaro Aire 1/4" mesh screen keeps animals and rodents out while allowing maximum air exhaust
Stainless Steel



Solar Panel

27 watt, 1.25 amp proprietary, high purity, mono-crystalline cell solar panel
Weather proof in the most severe conditions
High transparent, low iron tempered glass
Built for maximum performance and safety



Fan Blade

Specifically designed for the Solaro Aire solar powered ventilation system
12" - 5 blade aluminum fan, aerodynamically optimized blade to improve airflow
Operates whisper quiet throughout the day

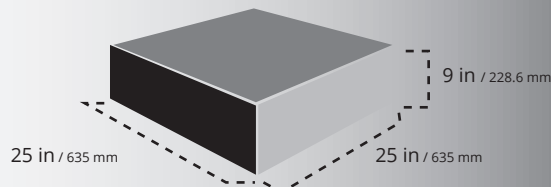
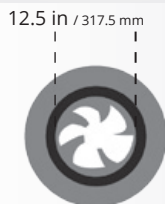
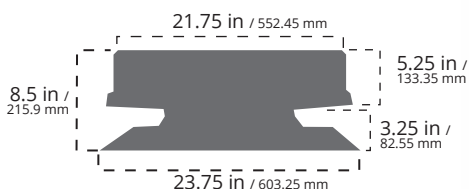


Motor & Fan Mount

The Max Aire motor is mounted under the aluminum air deflector. Keeping it out of the air stream



Dimensions & Weight



Important Note: The Solaro Aire Attic Fan Ventilation System is 100% fire proof and all electrical components are hidden under the air diverting cowling creating an extremely safe and efficient ventilation system

Limited Lifetime Warranty - See warranty details for additional information.

888-355-5786



solaroenergy.com

22955 McAuliffe Drive, Suite A • Robertsdale, AL 65767